



# COMPANY PROFILE

PIPING & CONTAINMENT SYSTEM





# About the **Contracting Division**

Wacamco's Contracting Division delivers specialized infrastructure and construction services for fuel stations. We execute underground systems, mechanical installations, and site works with strict adherence to safety, quality, and industry standards





# ABOUT WACAMCO

## Our vision

- To be the first choice in providing high-quality fuel station supplies and maintenance by professional staff. We aspire to be the pioneer in delivering solutions that reflect our values of accuracy, performance, and efficiency, making our services the best in the market.

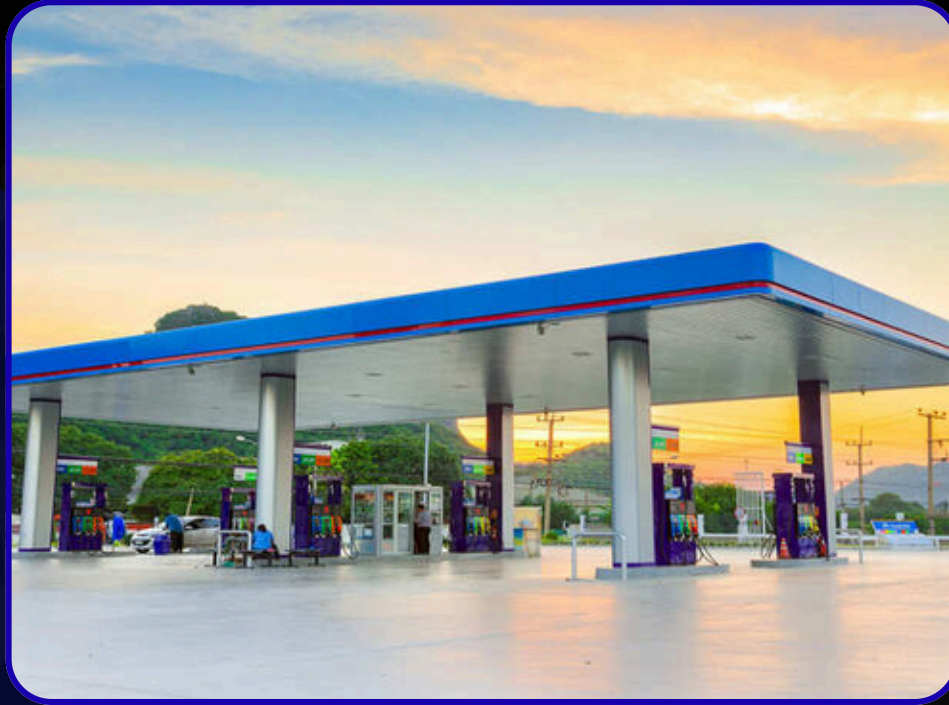
## our mission

- At Wacamco, we provide fuel station supplies and maintenance with the highest levels of accuracy and efficiency, incorporating distinct touches. We are committed to providing integrated solutions to ensure that your equipment remains at peak performance with a touch of excellence.

## Our goals

- Achieving leadership in the field of fuel station supplies and maintenance by providing high-quality services with distinguished hands and ensuring customer satisfaction through continuous innovation, efficiency, and professionalism in everything we do.





# Our values

- Accuracy: We pay attention to the smallest details to ensure the highest standards of quality.
- Performance: We are committed to providing services that exceed our customers' expectations.
- Efficiency: We use the latest technologies to achieve effective and distinguished results.



# Why choose Wacamco

- Time commitment
- Outstanding service
  - Experience and efficiency
  - Customer satisfaction guarantee
  - For attention to the smallest details





# CONTENT



UNDERGROUND PETROL PIPE SYSTEM DOUBLE-WALL  
CONTAINMENT PIPE DOUBLE WALL FITTING AND PARTS  
75/63 FUEL DELIVERY PIPELINE (CONDUCTIVE)  
125/110 FUEL OFF LOADING PIPELINE (CONDUCTIVE) SINGLE WALL  
PIPE  
SINGLE WALL FITTING AND PARTS  
63 OR 54MM FUEL DELIVERY PIPELINE (CONDUCTIVE)  
90 OR 110MM FUEL OFFLOADING PIPELINE (CONDUCTIVE)  
PRIMARY UNDERGROUND PIPE SYSTEM  
SECONDARY UNDERGROUND PIPE SYSTEM SPILL CONTAINMENT  
SYSTEM  
MANHOLE COVER  
SMC COMPLETE SEALING MANHOLE COVER G1000 ATG  
SMC COMPLETE SEALING MANHOLE COVER FLEXIBLE ENTRY  
BOOT  
STAINLESS STEEL FLEXIBLE CONNECTORS PRESSURE VACUUM  
VENT  
OPEN ATMOSPHERIC VENTS WELDING KIT AND TOOLS  
SUBMERSIBLE PUMP SYSTEM SELECTION PARAMETER  
INSTALLATION DIAGRAM



# UNDERGROUND PETROL PIPE SYSTEM

Our Petrol Pipe System is pioneered in China; the pipeline has been in the market for more than 10 years. It's made from HDPE (High Density Polyethylene), designed for fast, simple installation, providing a tried and tested long-term solution. Working temperature range from  $-40^{\circ}\text{C}$  to  $50^{\circ}\text{C}$ , with excellent capability. Corrosion resistant, especially in coastal and saline areas, compared with steel pipeline. The pipeline has high safety. The burst pressure of the pipeline exceeds 40 standard atmospheric pressure, ten times the working pressure, and it also has incomparable advantages. It's Lightweight, convenient for transport, and installation pipe installation costs 50% lower than the steel pipe installation costs.



# FEATURES AND **BENEFITS**

- Working temperature: 40°C - +50°C Sinopec
- listed products.
- Single and Double wall systems can be options
- with EN141 25 certification
- 24-hour online leakage detection system





# Contracting & Fuel Station Infrastructure

Wacamco provides integrated contracting services for fuel station infrastructure projects. Our scope includes underground piping systems, containment solutions, site preparation, and system installation, ensuring full compliance with safety regulations and international quality standards.

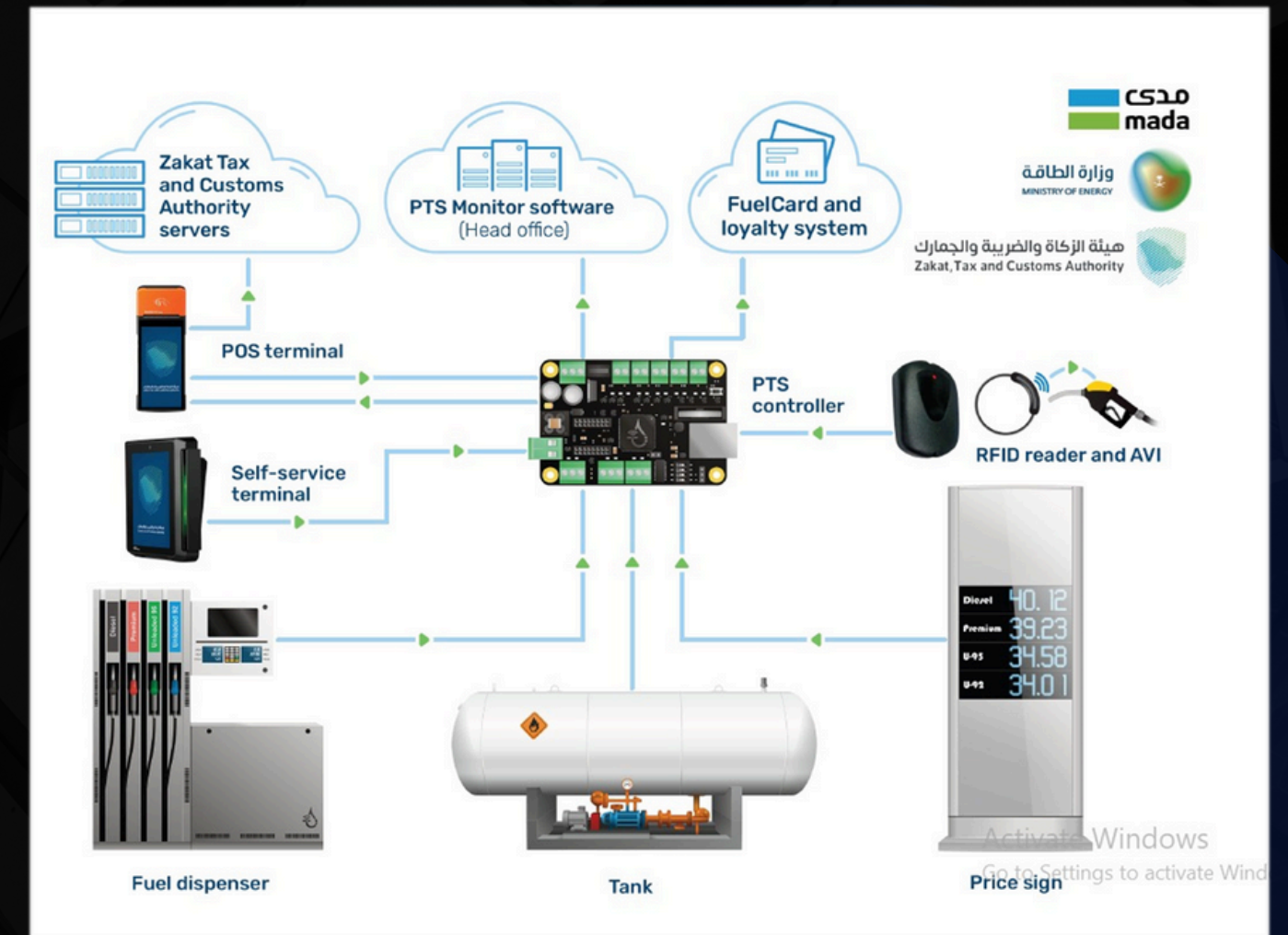
- Fuel station infrastructure works
- Underground piping & containment installation
- Compliance with safety and industry standards





# Integrated Fuel Station System Architecture

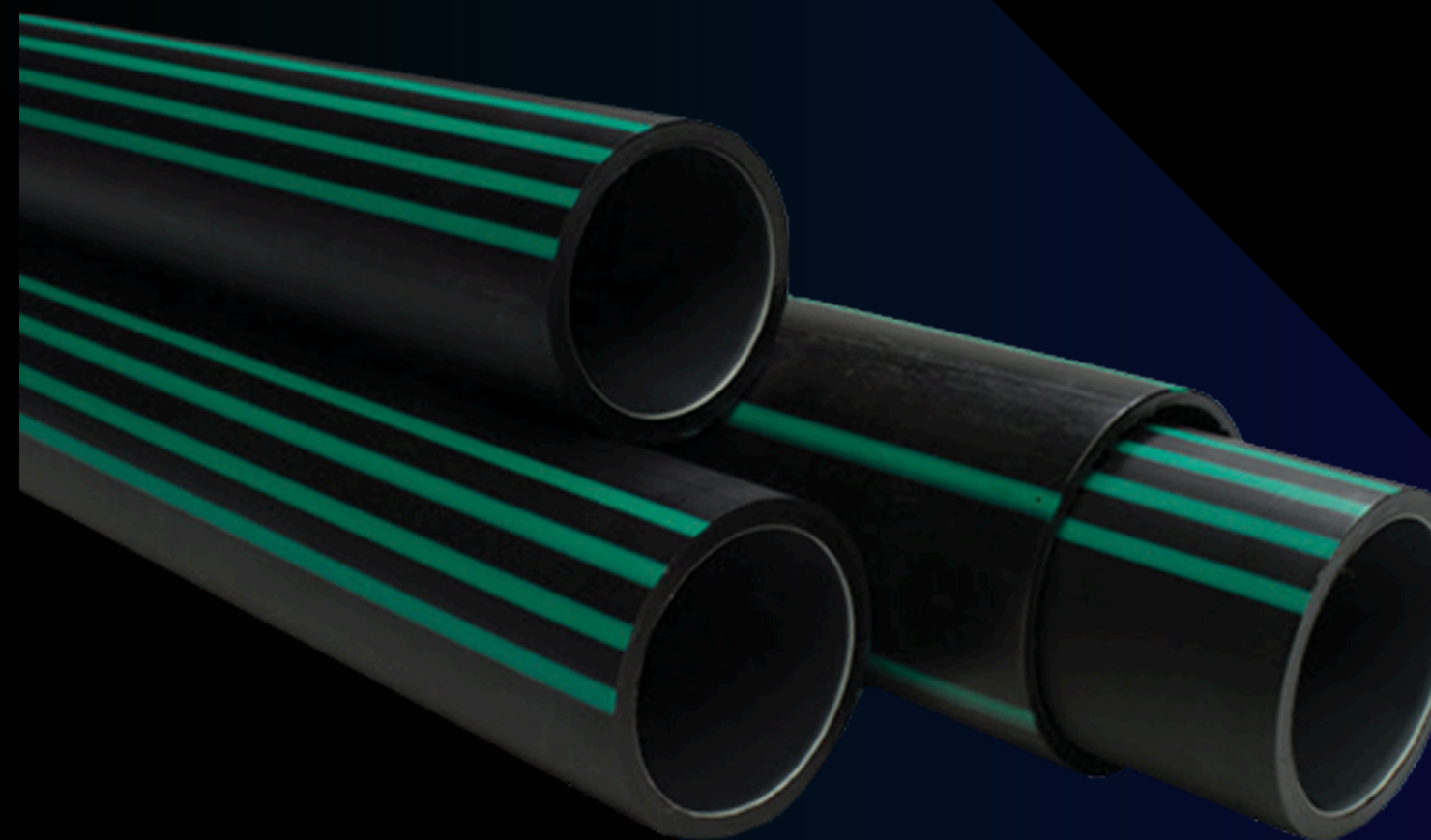
This diagram illustrates the complete fuel station system integration, connecting fuel dispensers, tanks, POS terminals, controllers, monitoring software, and government compliance systems into one unified and secure infrastructure





# UPP® SEMI-RIGID PIPEWORK SYSTEM

Since its introduction as the world's first electrofusion pipework system for fuel applications over thirty years ago, UPP® semi-rigid pipework has become known globally as the standard for liquid tight pipework systems. UPP® pipework utilises the advanced electrofusion welding process to effectively bond system components together into one, leak proof system.





# TECHNICAL ADVANTAGES

- UPP® pipe features an innovative clear inner lining made of natural EVOH resin to provide maximum pipe strength and superior vapour permeation and hydrocarbon barrier qualities.
- UPP® pipe is the first to receive an exception Class T1 temperature rating with its EN14125 approval, a true testament to its strength.
- The welder unit itself calculates the exact settings required to complete the weld, regardless of the pipework diameter or temperature, leaving no settings for the installer to input.
- The end of a piping run can be fitted with a wide variety of termination fittings to accommodate any application.
- Fittings are specifically designed to eliminate the number of bolt holes, rubber seals, band clamps and any potential leak paths.
- The UPP® electrofusion welding process is safe and simple to complete in any climate and virtually any weather condition.
- An installer simply prepares the components, fits them together, attaches welder leads to the fitting, and then presses a single button on the welding unit to initiate the process.



# SPECIFICATIONS

## UPP®EN14125:2013 Standard Primary Pipe

- Material: PE100 with EVOH resin barrier
- Primary pressure rating (bar/psi): 10/145
- Primary colour: Black with two clusters of four green stripes, clear inner liner
- Temperature rating: Class T1 Rating (EN14125:2013) -40 °C to 50 °C
- Primary vacuum rating (-bar/"Hg): -0.9/-26.6

## UPP®EN14125:2013 Standard Fill Pipe

- Material: PE100 with EVOH resin barrier
- Primary pressure rating (bar/psi): 6/87
- Primary colour: Black with two clusters of four green stripes, clear inner liner
- Temperature rating: Class T1 Rating (EN14125:2013) -40 °C to 50 °C



# SPECIFICATIONS

## UPP®EN14125:2013 Standard Coaxial (Secondary) Pipe

- Material: PE100 with EVOH resin barrier
- Primary pressure rating (bar/psi): 10/145
- Primary colour: Black with four green stripes, clear inner liner
- Secondary colour: Black with six green stripes
- Secondary pressure rating (bar/psi): 5/72
- Temperature rating: Class T1 Rating (EN14125:2013) -40 °C to 50 °C
- Primary vacuum rating (-bar/"Hg): -0.9/-26.6
- Secondary vacuum rating (-bar/"Hg): -0.6/-17.8

## UPP®EN14125:2013 Standard Secondary Sleeve

- Material: PE100
- Secondary pressure rating (bar/psi): 5/72
- Primary colour: Black with six green stripes
- Temperature rating: Class T1 Rating (EN14125:2013) -40 °C to 50 °C
- Primary vacuum rating (-bar/"Hg): -0.6/-17.8



# ORDERING INFORMATION

## UPP®EN14125:2013 Standard Primary Pipe

Model	Ø (mm)	Unit	SDR	Primary ID (mm)	Bend Radius (m)
001-032-100-E	32	100 m Coil	11	26	0.5
001-050-006-E	50	5.8 m Stick	11	40.8	0.75
001-050-050-E	50	50 m Coil	11	40.8	0.75
001-050-100-E	50	100 m Coil	11	40.8	0.75
001-063-006-E	63	5.8 m Stick	13.6	53.6	0.9
001-063-008-E	63	8 m Stick	13.6	53.6	0.9
001-063-100-E	63	100 m Coil	13.6	53.6	0.9
001-090-006-E	90	5.8 m Stick	13.6	76.6	2.25
001-090-050-E	90	50 m Coil	13.6	76.6	2.25
001-110-006-E	110	5.8 m Stick	13.6	93.8	2.75
001-160-005-E	160	5.8m Stick			
001-160-011-E	160	11.5 Stick			

## UPP®EN14125:2013 Standard Fill Pipe

Model	Ø (mm)	Unit	SDR	Primary ID (mm)	Bend Radius (m)
001-110-006-FILL-E	110	5.8m Stick	17	96.8	2.75

## UPP® EN14125:2013 Standard Coaxial (Secondary) Pipe

Model	Ø (mm)	Unit	SDR	Primary ID (mm)	Bend Radius (m)
001-040-032-050-E	40/32	50 m Coil	11 / 17	26	0.6
001-040-032-100-E	40/32	100 m Coil	11 / 17	26	0.6
001-063-050-030-E	63/50	30 m Coil	11 / 26	40.8	0.9
001-063-050-100-E	63/50	100 m Coil	11 / 26	40.8	0.9
001-075-063-010-E	75/63	10 m Stick	13.6 / 26	53.6	1.12
001-075-063-030-E	75/63	30 m Coil	13.6 / 26	53.6	1.12
001-075-063-050-E	75/63	50 m Coil	13.6 / 26	53.6	1.12

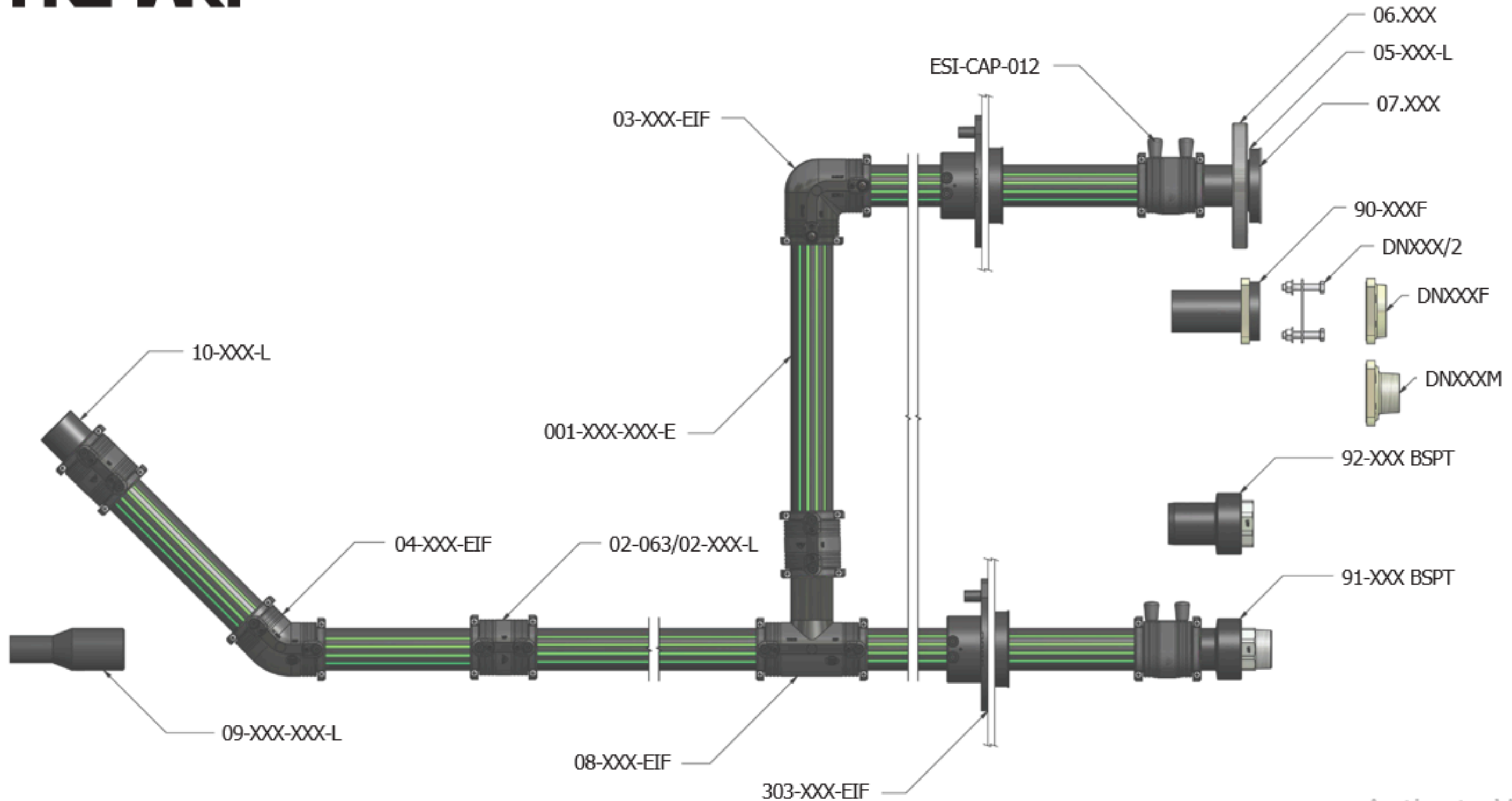
## UPP®EN14125:2013 Standard Secondary Sleeve

Model	Ø (mm)	Unit	SDR	Bend Radius (m)
000-063-006-SC-E	63	5.8 m Stick	26	0.9
000-075-006-SC-E	75	5.8 m Stick	26	1.12
000-075-008-SC-E	75	8 m Stick	26	1.12
000-110-006-SC-E	110	5.8 m Stick	26	2.75
000-125-006-SC-E	125	5.8 m Stick	26	3.1



# PRIMARY

## PRIMARY





Model	Description	Unit
001-032-100-E	Extra Pipe - 32 mm	100 m coil
001-050-006-E	Extra Pipe - 50 mm	5.8 m stick
001-050-050-E		50 m coil
001-050-100-E		100 m coil
001-063-006-E	Extra Pipe - 63 mm	5.8 m stick
001-063-008-E		8 m stick
001-063-100-E		100 m coil
001-090-006-E	Extra Pipe - 90 mm	5.8 m stick
001-090-050-E		50 m coil
001-110-006-E	Extra Pipe - 110 mm	5.8 m stick
001-110-006-FILL-E	Extra Pipe FILL - 110 mm	5.8 m stick
001-110-050-FILL-E		50 m coil
001-160-011-E	Extra Pipe - 160 mm	11.5 m stick



Model	Description	Diameter Ø(mm)
02-032-L	Fusion Coupler - Long	32
02-050-L	Fusion Coupler - Long	50
02-063	Fusion Coupler - Long	63
02-090-L	Fusion Coupler - Long	90
02-110-L	Fusion Coupler - Long	110
02-160-L	Fusion Coupler - Long	160





Model	Description	Diameter Ø(mm)
03-050-L	Plain Elbow	50
03-063-L	Plain Elbow	63
03-090-L	Plain Elbow	90
03-110-L	Plain Elbow	110
03-160-L	Plain Elbow	160



Model	Description	Diameter Ø(mm)
03-032-EIF	Electrofusion Elbow	32
03-050-EIF	Electrofusion Elbow	50
03-063-EIF	Electrofusion Elbow	63
03-090-EIF	Electrofusion Elbow	90
03-110-EIF	Electrofusion Elbow	110



Model	Description	Diameter Ø(mm)
04-050-L	Plain Elbow	50
04-063-L	Plain Elbow	63
04-090-L	Plain Elbow	90
04-110-L	Plain Elbow	110
04-160-L	Plain Elbow	160

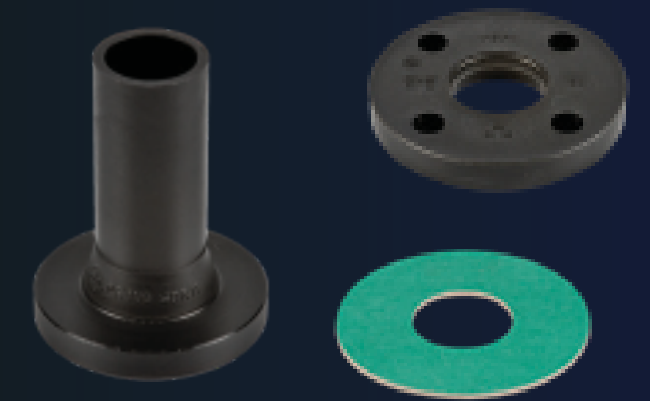




Model	Description	Diameter Ø(mm)
04-032-EIF	Electrofusion	32
04-050-EIF	Electrofusion	50
04-063-EIF	Electrofusion	63
04-090-EIF	Electrofusion	90
04-110-EIF	Electrofusion	110

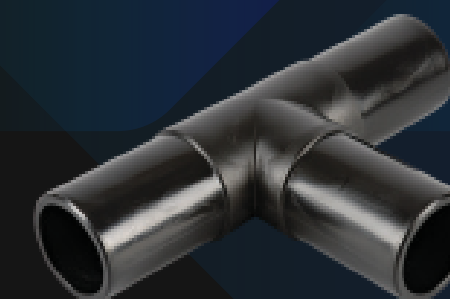


Model	Description	Diameter Ø(mm)
05-032-L	Stub	32
06.32	Flange Circular PN DN22	32
07.32	Gasket for Stub	32
05-050-A	Stub, ANSI	50
05-050-L	Stub	50
06.50	Flange Circular PN16 DN40	50
07.50	Gasket 50mm for Stub	50
05-063-L	Stub 63mm	63
06.63	Flange Circular PN16 DN50 63mm	63
07.63	Gasket 63mm for Stub	63
05-090-L	Stub 90mm	90
06.90	Flange Circular PN16 DN80 90mm	90
07.90	Gasket 90mm for Stub	90
05-110-L	Stub 110mm	110
06.110	Flange Circular PN16 DN100 110mm	110
07.110	Gasket 110mm for Stub	110
05-160-L	Stub 160mm	160
06.160	Flange Circular PN16 DN150 160mm	150/160
07.160	Gasket 160mm for Stub	160





Model	Description	Diameter Ø(mm)
08.32	Tee Equal	32
08-050-L	Tee Equal	50
08-063-L	Tee Equal	63
08-090-L	Tee Equal	90
08-090-063-L	Reducer Tee Equal	90/63
08-110-L	Tee Equal	110
08.110.063-L	Reducer Tee Equal	110/63
08-160-L	Tee Equal	160



Model	Description	Diameter Ø(mm)
08-032-EIF	Electrofusion Tee Equal	32
08-050-EIF-S	Electrofusion Tee Equal	50
08-063-EIF-S	Electrofusion Tee Equal	63
08-090-EIF-S	Electrofusion Tee Equal	90
08-110-EIF	Electrofusion Tee Equal	110



Model	Description	Diameter Ø(mm)
09-063-050-EIF	Fusion Reducer	63/50
09-090-063-EIF	Fusion Reducer	90/63
09-110-090-EIF	Fusion Reducer	110/90





Model	Description	Diameter Ø(mm)
09-050-032-L	Plain Reducer	50/32
09-063-032-L	Plain Reducer	63/32
09-063-050-L	Plain Reducer	63/50
09-090-050-L	Plain Reducer	90/50
09-090-063-L	Plain Reducer	90/63
09-110-063-L	Plain Reducer	110/63
09-160-110-L	Plain Reducer	160/110

Model	Description	Diameter Ø(mm)
10-032-L	End Cap	32
10-050-L	End Cap	50
10-063-L	End Cap	63
10-090-L	End Cap	90
10-110-L	End Cap	110

Model	Description	Diameter Ø(mm)
302-040	Fusion Seal	40
303-050-EIF	Fusion Seal with integrated coupler	50
303-063-EIF	Fusion Seal with integrated coupler	63
304-110-090-TP-3	Fusion Seal with integrated coupler and test port	90
304-110-EIF	Fusion Seal with integrated coupler	110
308	8" Fusion Seal for 90/110/160mm	90/110/160





Model	Description	Diameter Ø(mm)
11.32UF	32mm x 1" BSP	32



Model	Description	Diameter Ø(mm)
11-503F BSPT	Compression Elbow 50mm x 1½" BSPT Female	50



Model	Description	Diameter Ø(mm)
11-508 BSPT	Compression Tee 50mm x 1½" BSP Female	50



Model	Description	Diameter Ø(mm)
11.321	32mm x 1" BSP Male	32
11-501M BSPT	Compression Termination 50mm x 1½" BSPT Male	50
11-631M BSPT	Compression Termination 63mm/2" diameter - BSPT	63
11-631M-1 BSPT	Compression Termination 63mm/1½" diameter - BSPT	63
12-050 BSPT	Compression Termination 50mm/1½" diameter - BSPT Male	50
12-063 BSPT	Compression Termination 63mm/2" diameter - BSPT Male	63
12-063-1 BSPT	Compression Termination 50mm/1½" diameter - BSPT Male	63
12-090 BSPT	Compression Termination 90mm/3" diameter - BSPT Male	90
12-110 BSPT	Compression Termination 110mm/4" BSPT diameter - BSPT Male	110





Model	Description	Diameter Ø(mm)
91-032 BSPT	Termination 32mm x 1" BSPT male	32
91-050 BSPT	Termination 50mm x 1½" BSPT Male	50
91-050 NPT	Termination 50mm x 1½" NPT Male	50
91-063 BSPT	Termination 63mm x 2" BSPT Male	63
91-063 NPT	Termination 63mm x 2" NPT Male	63
91-063-1 BSPT	Termination 63mm x 1½" BSPT Male	63
91-063-1 NPT	Termination 63mm x 1½" NPT Male	63
91-090 BSPT	Termination 90mm x 3" BSPT Male	90
91-090 NPT	Termination 90mm x 3" NPT Male	90
91-110 BSPT	Termination 110mm x 4" BSPT Male	110
91-110 NPT	Termination 110mm x 4" NPT Male	110



Model	Description	Diameter Ø(mm)
92-032 BSPT	Termination 32mm x 1" BSPT Female	32
92-050 BSPT	Termination 50mm x 1½" BSPT Female	50
92-050 NPT	Termination 50mm x 1½" NPT Female	50
92-050 UF BSPT	Union Termination 50mm x 1½" BSPT Female	50
92-050 UF NPT	Union Termination 50mm x 1½" NPT Female	50
92-063 BSPT	Termination 63mm x 2" BSPT Female	63
92-063 NPT	Termination 63mm x 2" NPT Female	63
92-063 UF BSPT	Union Termination 63mm x 2" BSPT Female	63
92-063-1 BSPT	Termination 63mm x 1½" BSPT Female	63
92-063-1 NPT	Termination 63mm x 1½" NPT Female	63
92-063UF NPT	Union Termination 63mm x 2" NPT Female	63
92-090 BSPT	Termination 90mm x 3" BSPT Female	90
92-090 SS BSPT	Stainless Steel Termination 90mm x 3" BSPT Female	90
92-090 NPT	Termination 90mm x 3" NPT Female	90
92-110 BSPT	Termination 110mm x 4" BSPT Female	110
92-110 NPT	Termination 110mm x 4" NPT Female	110





Model	Description	Diameter Ø(mm)
91-032 SS BSPT	Stainless Steel Termination 32mm x 1" BSPT Male	32
91-050 SS BSPT	Stainless Steel Termination 50mm x 1½" BSPT Male	50
91-063 SS BSPT	Stainless Steel Termination 63mm x 2" BSPT Male	63

Model	Description	Diameter Ø(mm)
92-032 SS BSPP	Stainless Steel Termination 32mm x 1" BSPP Female	32
92-050 SS BSPP	Stainless Steel Termination 50mm x 1½" BSPP Female	50
92-063 SS BSPP	Stainless Steel Termination 63mm x 2" BSPP Female	63

Model	Description	Diameter Ø(mm)
90-050F	Flanged Termination 50mm	50
DN40/2	Gasket & Bolt Set for Coupling Flange DN 40	50
DN40F	Coupling Flange 50 mm BSPP Female	50
DN40M	Coupling Flange 50mm BSPT Male	50
90-063F	Flanged Termination 63mm	63
DN50/2	Gasket & Bolt Set for Coupling Flange DN 50	63
DN50F	Coupling Flange 63 mm BSP Female	63
DN50M	Coupling Flange 63mm BSPT Male	63
DN50M NPT	Coupling Flange 63mm NPT Male	63
90-090F	Flanged Termination	90
DN80/2	Gasket & Bolt Set for Coupling Flange DN 80	90
DN80F	Coupling Flange 90mm BSP Female	90
DN80M	Coupling Flange 90mm BSPT Male	90
90-110F	Flanged Termination 110mm	110
DN100/2	Gasket & Bolt Set for Coupling Flange DN 100	110
DN100F	Coupling Flange 110mm BSP Female	110



Model	Description	Diameter O(mm)
BV(2)	Ball Valve 63mm BSP F/F ¼ Turn - Galvanised Steel	63

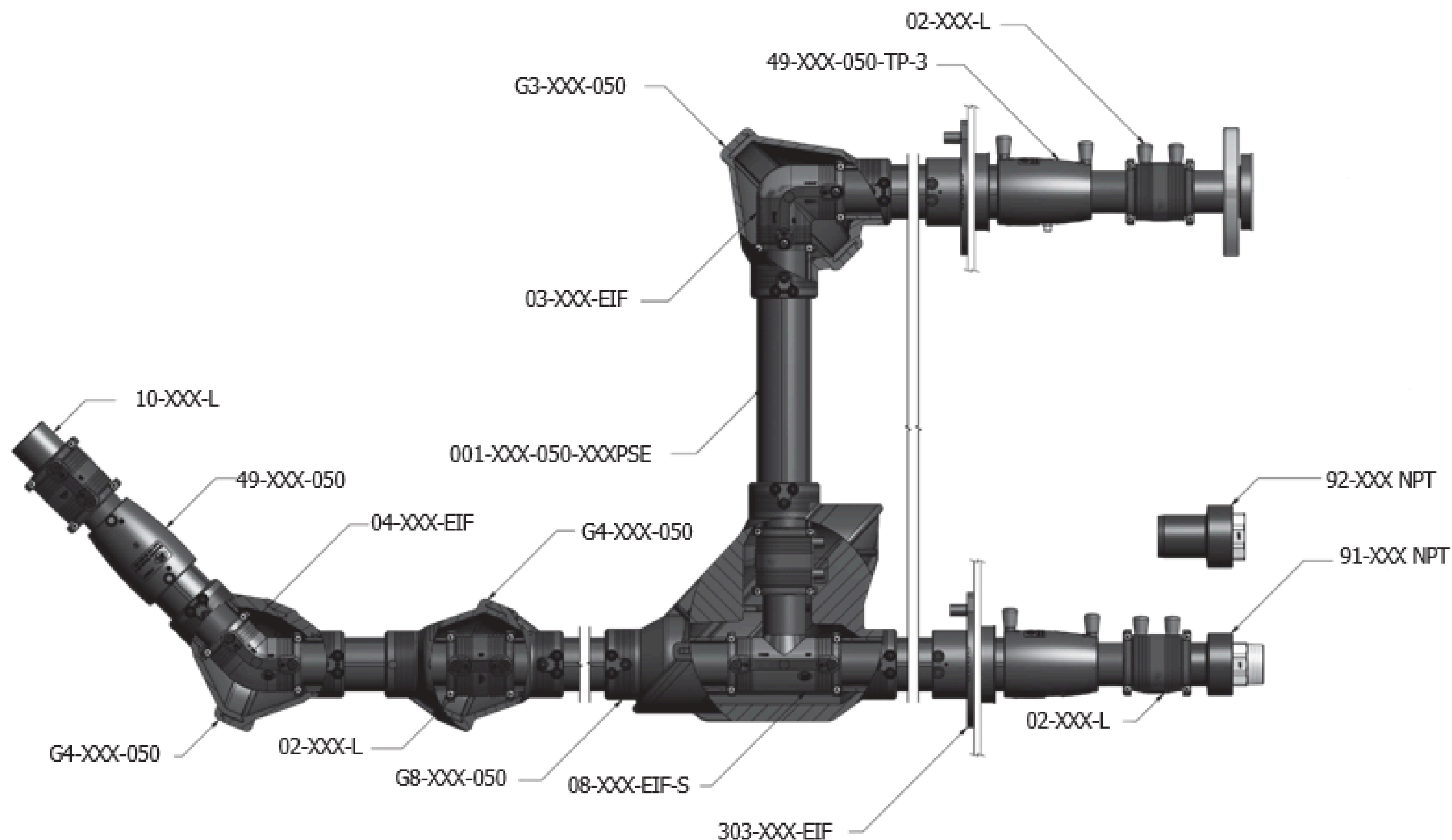


Model	Description	Diameter O(mm)
ESI-CAP-012	Weld Pin Protection Cap	All
91-050-TOOL	Plate <u>Spanner</u> 50A/F 91-050 For all Male 50mm sizes	50
92-050-TOOL	Plate <u>Spanner</u> 55A/F 92-050 For all Female 50mm sizes	50
11.50G	Spare Gasket for 50UF fittings	50
408046001	O Ring NBR 35 x 2.5 for 12-050	50
91-063-TOOL	Plate <u>Spanner</u> 62A/F 91-063 For all Male 63mm sizes	63
92-063-TOOL	Plate <u>Spanner</u> 67A/F 92-063 For all Male 63mm sizes	63
11.63G	Spare Gasket for 63UF fittings	63
408045001	O Ring NBR 48 x 3 for 12-063	63
11-63X OL	Spare Olive for 11-63X	63
11-50X OL	Spare Olive for 11-50X	50
408044001	O Ring NBR 69.5 x 3 for 12-090	90
CW-125-PIPE	Chain Wrench 125mm Pipe Max	90
408043001	O Ring NBR 89.5 x 3 for 12-110	110





# SECONDARY



Model	Description	Pack Size	Diameter O(mm)
001-040-032-050-E	Extra Coaxial Pipe	50 m coil	40/32
001-040-032-100-E	Extra Coaxial Pipe	100 m coil	40/32
001-063-050-030-E	Extra Coaxial Pipe	30 m coil	63/50
001-063-050-100-E	Extra Coaxial Pipe	100 m coil	63/50
001-075-063-010-E	Extra Coaxial Pipe	10 m stick	75/63
001-075-063-030-E	Extra Coaxial Pipe	30 m coil	75/63
001-075-063-050-E	Extra Coaxial Pipe	50 m coil	75/63
000-063-006-SC-E	Secondary Pipe	5.8 m stick	63
000-075-006-SC-E	Secondary Pipe	5.8 m stick	75
000-075-008-SC-E	Secondary Pipe	8 m stick	75
000-110-006-SC-E	Secondary Pipe	5.8 m stick	110
000-125-006-SC-E	Secondary Pipe	5.8 m stick	125



Model	Description	Diameter O(mm)
02.40(SC)	Fusion Coupler Secondary	40
02.63(SC)	Fusion Coupler Secondary	63
02.75(SC)	Fusion Coupler Secondary	75
02.110(SC)	Fusion Coupler Secondary	110
02.125(SC)	Fusion Coupler Secondary	125
02.160(SC)	Fusion Coupler Secondary	160





Model	Description	Diameter O(mm)
09.110.75(SC)	Reducer Secondary	110/75
09.160.125(SC)	Reducer Secondary	160/125
13.75.40(SC)	Reducer Secondary	75/40



Model	Description	Diameter O(mm)
302-040	Fusion Seal 40mm	40
303-063-EIF	Fusion Seal 63mm with Integrated Coupler	63
303-075-EIF	Fusion Seal 75mm with Integrated Coupler	75
303-075-EIF-2	Fusion Seal 75mm with Integrated Coupler, 4mm weld pins	75
304-110-050-TP-3	Fusion Entry Seal with Secondary Coupler 110 x 50mm with Test Port	50
304-110-063-TP-3	Fusion Entry Seal with Secondary Coupler 110 x 63mm with Test Port	63
304-110-075-TP-3	Fusion Entry Seal with Secondary Coupler 110 x 75mm with Test Port	75
304-110-090	Fusion Seal with 110 & 90mm Coupler	90
304-110-090-TP-3	Fusion Seal with 110 & 90mm Coupler with Test Port	90
304-110-EIF	Fusion Seal 110mm with Integrated Coupler	110
305-125-110	Fusion Seal with 125 & 110mm Coupler	110
305-125-110-TP-3	Fusion Seal 125 & 110mm Coupler with Test Port	110
305-125-EIF	Fusion Seal 125mm with Integrated Coupler	125



Model	Description	Diameter O(mm)
49-040-032	Fusion Reducer Secondary	40/32
49-040-032-TP-3	Fusion Reducer Secondary with Test Port	40/32
49-063-050	Fusion Reducer Secondary	63/50
49-063-050-TP-3	Fusion Reducer Secondary with Test Port	63/50
49-075-063-1	Fusion Reducer Secondary	75/63
49-075-063-TP-3	Fusion Reducer Secondary with Test Port	75/63
49-110-063(SC)	Sliding Reducer Secondary	110/63
49-110-075(SC)	Sliding Reducer Secondary	110/75
49-110-090	SC Welding Reducer	110/90
49-110-090-TP-3	SC Welding Reducer with Test Port	110/90
49-125-110	SC Welding Reducer	125/110
49-125-110-TP-3	SC Welding Reducer with Test Port	125/110



Model	Description	Diameter O(mm)
91-063-050 BSPT	Male, BSPT thread	63/50
91-063-050-TP BSPT	Male, BSPT thread, with test port	63/50
91-075-063-1-TP BSPT	Male, 1½" BSPT thread with test port	75/63
91-075-063-TP BSPT	Male, 2" BSPT thread, with test port	75/63
91-110-090-TP BSPT	Male, BSPT thread, with test port	110/90
91-125-110-TP BSPT	Male, BSPT thread, with test port	125/110





Model	Description	Diameter O(mm)
92-063-050 BSPT	Female, BSPT thread	63/50
92-063-050-TP BSPT	Female, BSPT thread, with test port	63/50
92-075-063-1 BSPT	Female, 1½" BSPT thread	75/63
92-075-063-TP BSPT	Female, 2" BSPT thread, with test port	75/63
92-110-090 BSPT	Female, BSPT thread	110/90
92-110-090-TP BSPT	Female, BSPT thread, with test port	110/90
92-125-110 BSPT	Female, BSPT Thread	125/110
92-125-110-TP BSPT	Female, BSPT thread, with test port	125/110



Model	Description	Diameter O(mm)
G3-040-032	SC Gemini® 90° Elbow	40
G3-063-050	SC Gemini® 90° Elbow	63
G3-075-063	SC Gemini® 90° Elbow	75
G3-110-090	SC Gemini® 90° Elbow	110
G3-125-110	SC Gemini® 90° Elbow	125



Model	Description	Diameter Ø(mm)
G4-040-032	SC Gemini® Elbow or SC Gemini® Inline Joint	40/32
G4-063-050	SC Gemini® Elbow or SC Gemini® Inline Joint	63/50
G4-075-063	SC Gemini® Elbow or SC Gemini® Inline	75/63
G4-110-090	SC Gemini® Elbow or SC Gemini® Inline Joint	110/90
G4-125-110	SC Gemini® Elbow or SC Gemini® Inline Joint	125/90



Model	Description	Diameter Ø(mm)
G8-040-032	SC Gemini® Tee	40
G8-063-050	SC Gemini® Tee	63
G8-075-063	SC Gemini® Tee	75
G8-110-090	SC Gemini® Tee	110



Model	Description	Diameter Ø(mm)
10-040-SC	End Cap 40mm Secondary	40
10-075-SC	End Cap 75mm Secondary	75
10.110(SC)	End Cap 110mm Secondary	110



Model	Description	Diameter Ø(mm)
STB-100	Test Boot Secondary with Test Port	40/32
STB-175	Test Boot Secondary with Test Port	63/50
STB-200	Test Boot Secondary with Test Port	75/63



Model	Description
LDT 60-1	Leak Detection Tube Kit - not for use with STB-100 product offering
LDT60-2	Leak Detection Tube Kit - not for use with STB-100 product offering, tube only, no fittings
BPT-200	Leak Detection Tube Kit - for use with STB-100 product offering



Model	Description
ESI-CAP-012	Weld Pin Protection Cap

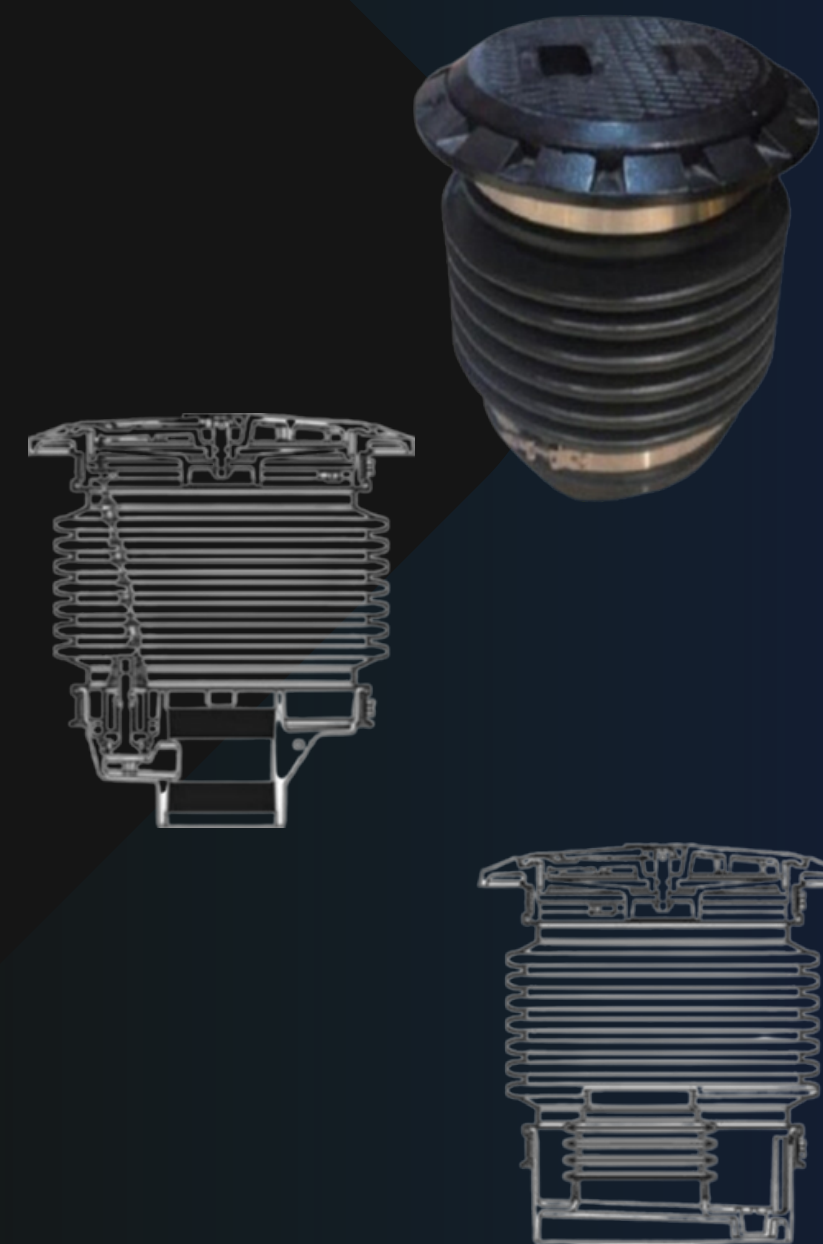




# SPILL CONTAINMENT SYSTEM

Spill containment system is used for unloading handing hole well, measuring oil handling hole well, tank monitoring handing hole well, electrostatic grounding handing hole well, etc.

- Specification: 530x465
- Product code: 3592(A50)
- Product color: black
- Product weight: about 41 Kg
- Load grade execution standard EN124: 1994
- Operating Temperature range: -40°C--+100°C
- Product structure: spill container, cover, frame, overfill prevention valves
- Composition material: spill container, cover, frame is SMC molded in one time, spill container bottom is made of corrosion resistant cast steel, the seals between parts is made of nitrile rubber and stainless-steel fastener

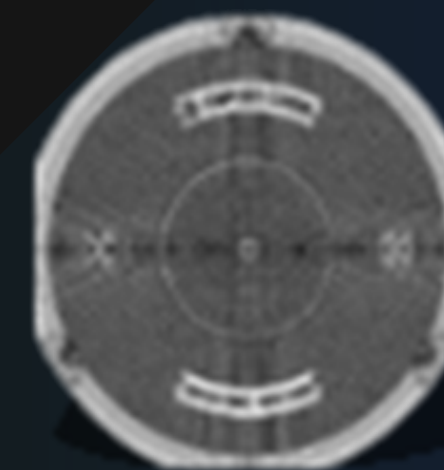
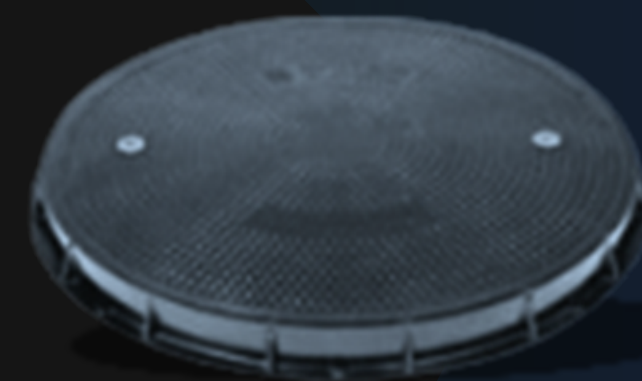


# MANHOLE COVER

C250 used for motor vehicle driving roads and parking areas.

D400 used for freight stations, docks and other heavy vehicles frequently driving roads, venues.

- Product Name: C 977-100 manhole cover & frame
- Specification: C 1074x100mm
- Code: C250 D400
- Standard: EN124 :1994
- Operating temperature range: -40°C--+100°C
- Product Color: Black
- Product structure: cover, frame, detachable side sealed structure
- Product material composition: manhole cover, frame is composed of SMC, side sealed structure is composed of SMC materials, 364 stainless steel fastener, and corrosion resistant rubber



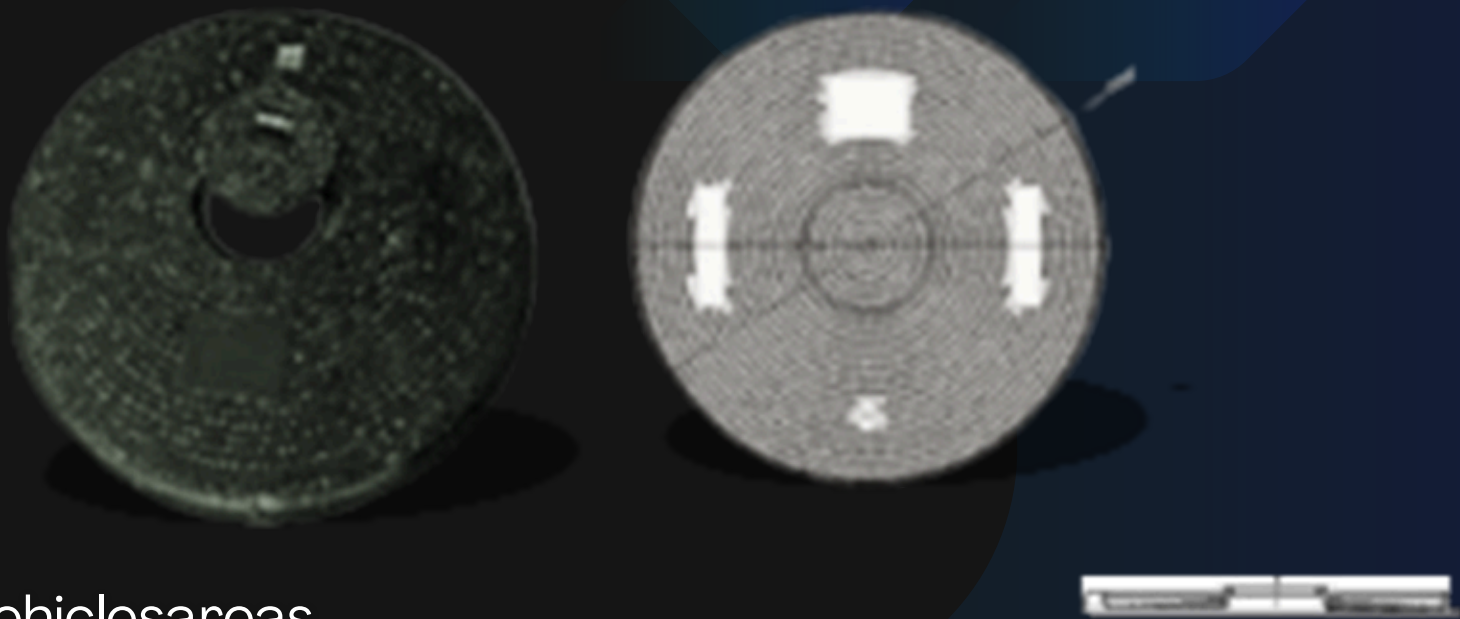


LOAD RATING	COVER DIMENSION	DEPTH OF INSERTION (H)	COVER DIAMETER (D)	WEIGHT
D4D0	Q1008*115	100 mm	Q980 mm	50 kg
CentralCover Dimension	Depth of Insertion(h,}	Cover dimeter d	Central cover clean opening (co )	Weight
B4 20‘ 60	60mm	Q420 mm	350 mm	Kg 10.5
Frame Dimension	Frame Depth{H)	Frame outer Diameter (D)	Net opening (co)	Weight
BJ 090“ 1 00	100mm	Q1080mm	900 mm	21kg

# FEATURES & BENEFITS

Composition materials: SMC and metal fastenings

- lockdown
- saline-alkali resistance I watertight
- antJskid
- And-static
- Colors can be customized
- Non- load bearingareas of the gas stafion and non heavy vehiclesareas



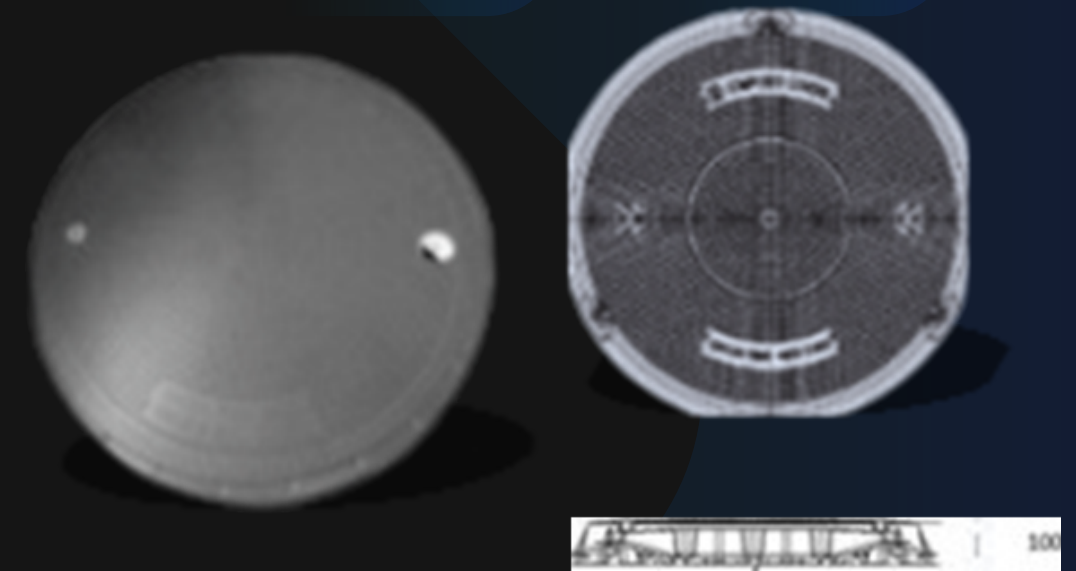
DIMENSION		DEPTH OF INSERTION	COVERDIAMETER	LOADING CLASS
COVER	Q1140*30	30mm	1140mm	NO-LOAD-BEARING
	Q1140*30	30mm	1080mm	NO-LOAD-BEARING
FRAME	DIMENSION	FRAME DEPTH (H)	OUTER DIAMETER(OD)	CLEAROPENING (CO)
	Q1170	75 mm	1170mm	1015mm



# FEATURES & BENEFITS

Composition materials: SMC, rubberseals andmetalfastenings

- Load-bearing
- Sealed
- Watertight
- Antiskid
- Anti-static
- Colors can be customized



Lane load-bearing areas of the gas station and areas where heavy vehicles use frequently

DIMENSION		DEPTH OF INSERTION	COVERDIAMETER	LOADING CLASS
COVER	Q1090	50mm	1090mm	D400
	Q1090	50mm	1090mm	C250
	DIMENSION	FRAME DEPTH (H)	FRAME OUTER DIAMETER (OD)	CLEAROPENING (CO)
	Q1180	100 mm	1180mm	1000mm

# SMC COMPLETE SEALING MANHOLE COVERG1000

Composition materials: SMC, rubber seals, and metal fastenings

## FEATURES & BENEFITS

- Load-bearing
- Sealed
- Watertight
- Antiskid
- Anti-static
- Colors can be customized
- Lane load-bearing areas of the gas station and areas where heavy vehicles use frequently



DIMENSION		DEPTH OF INSERTION	COVERDIAMETER	LOADING CLASS
COVER	Q1090	50mm	1090mm	D400
	Q1090	50mm	1090mm	C250
FRAME	DIMENSION	FRAME DEPTH (H)	FRAME OUTER DIAMETER (OD)	CLEAROPENING (CO)
	Q1180	100 mm	1180mm	1000mm

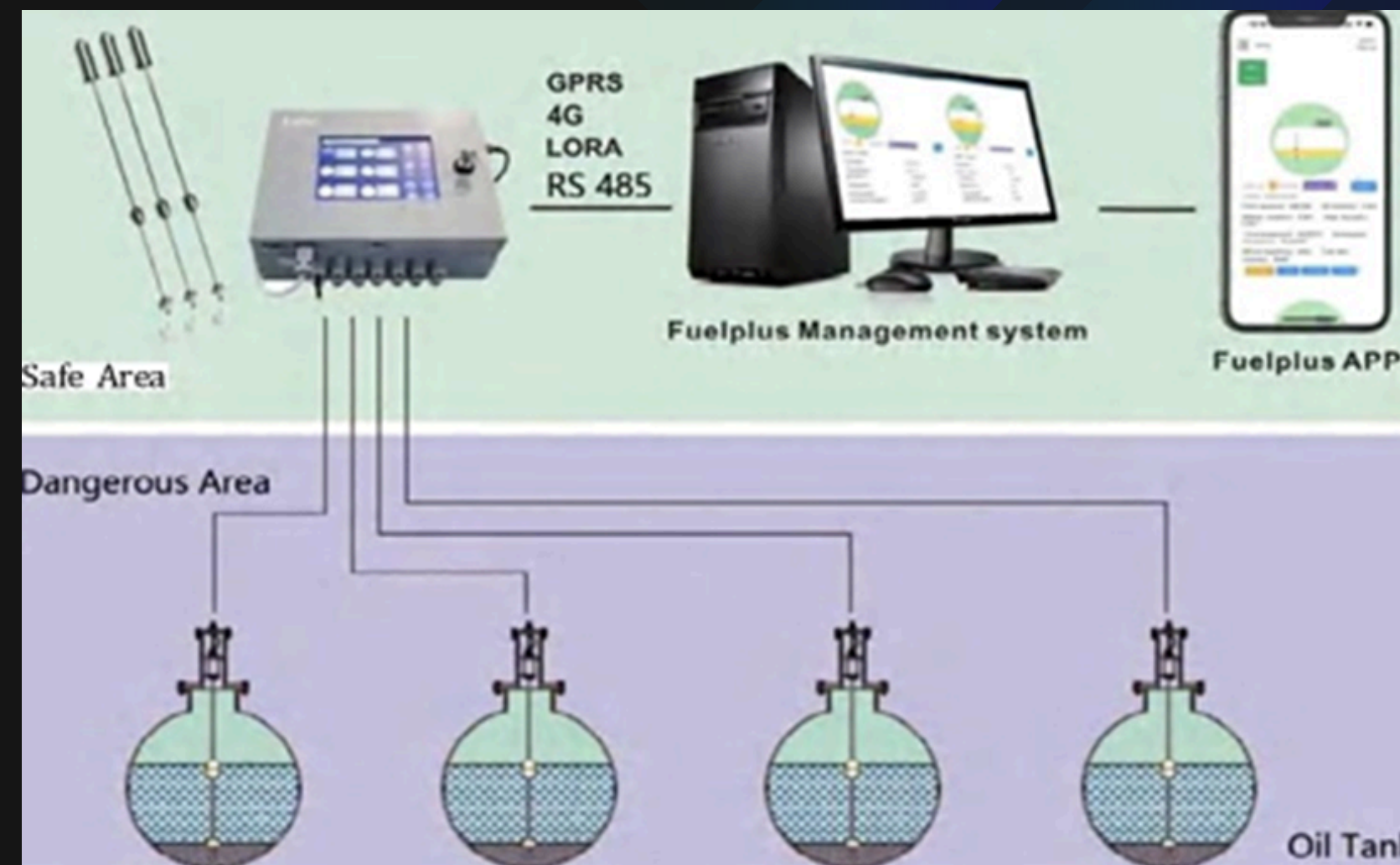
# SMC COMPLETE SEALING MANHOLE COVERG1000

## ATG SYSTEM

- Support both Cloud and Local server
- Support wire and wireless connection
- Monitor the probe real time
- Support alarm report
- Support shift report
- Support search by time or – and by tank
- User – defined alarms
- Report can be saved as a PDF or Excel

## ATG

Tank level gauge control system consists of liquid level gauge controller. Magneto strictive level gauge, management sever and management software . and other components through the tank level .the average temperature and the other data of the accurate measurement effective management of gas station invoicing and shift and other business . the system can monitor 1-6 tanks at same time fully realize the closed measurement and data quasi. Indeed ,safety ,at the same time with side leakage alarm accident alarm liquid level alarm and other functions . petrol station can be full bit of monitoring .fully automated petrol station management, intelligent .





The console is the interface of customer operation and the display also is the data management and record center. The major unit of the console is the power board, main board, touch screen, and safety barrier through the reducing voltage from the power board, it will supply a safety voltage and current status for the whole system.

Ecotec probe can also work directly to fuelplus system without install the console to save the cost, by means of wire and wireless such as LoRa, 4G, 3G, GRPS, Wi-Fi, and so on

Console feature, Touch screen Real-time monitor

Can check 8 tanks at the same time

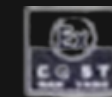
Alarm and remove alarm automatically. Create a report automatically

Attendant management real-time clock

Tank data input



## PROBE



SP series magenetostrictive tank level probe can accurately measure the product level , water level and temperature of tank and transmit data to console in real time . it consists of floater kits , measuring robe and 316L protection tube , probe head, and communication cable .

## PROBE FEATURES

- Real time data transmission
- Measure fuel liquid level and water lever ( if have) at same time
- 5 temperature sensors distributed on probe
- Intrinsically safety , used in class 0
- Rs485 communication port



- Digital signal transition , high anti-interruption ability
- Maximum communication distance 1200 m
- High precision as 0.5 mm and resolution as 0.01m
- 316L stainless steel ensures longer lifetime in most petroleum products
- Easy to install
- Maintenance free
- Reliable performance and environment adaptability



## SMC COMPLETE SEALING MANHOLE COVER

Compositions: SMC and metal fastenings

### FEATURES & BENEFITS

- Load-bearing
- Sealed
- Watertight
- Antiskid
- Anti-static
- Colors can be customized
- Lane load-bearing areas and non-load-bearing areas of the gas station



DIMENSION		DEPTH OF INSERTION	COVERDIAMETER	LOADING CLASS	
COVER		770*770mm	45mm	770*770mm	D400
		770*770mm	45mm	770*770mm	C250
FRAME		DIMENSION	FRAME DEPTH (H)	FRAME OUTER DIAMETER (OD)	CLEAROPENING (CO)
		830*830mm	80 mm	830*830mm	700*700mm



# SMC COMPLETE MANHOLE COVER

Composition materials: SMC and metal fastenings

## FEATURES & BENEFITS

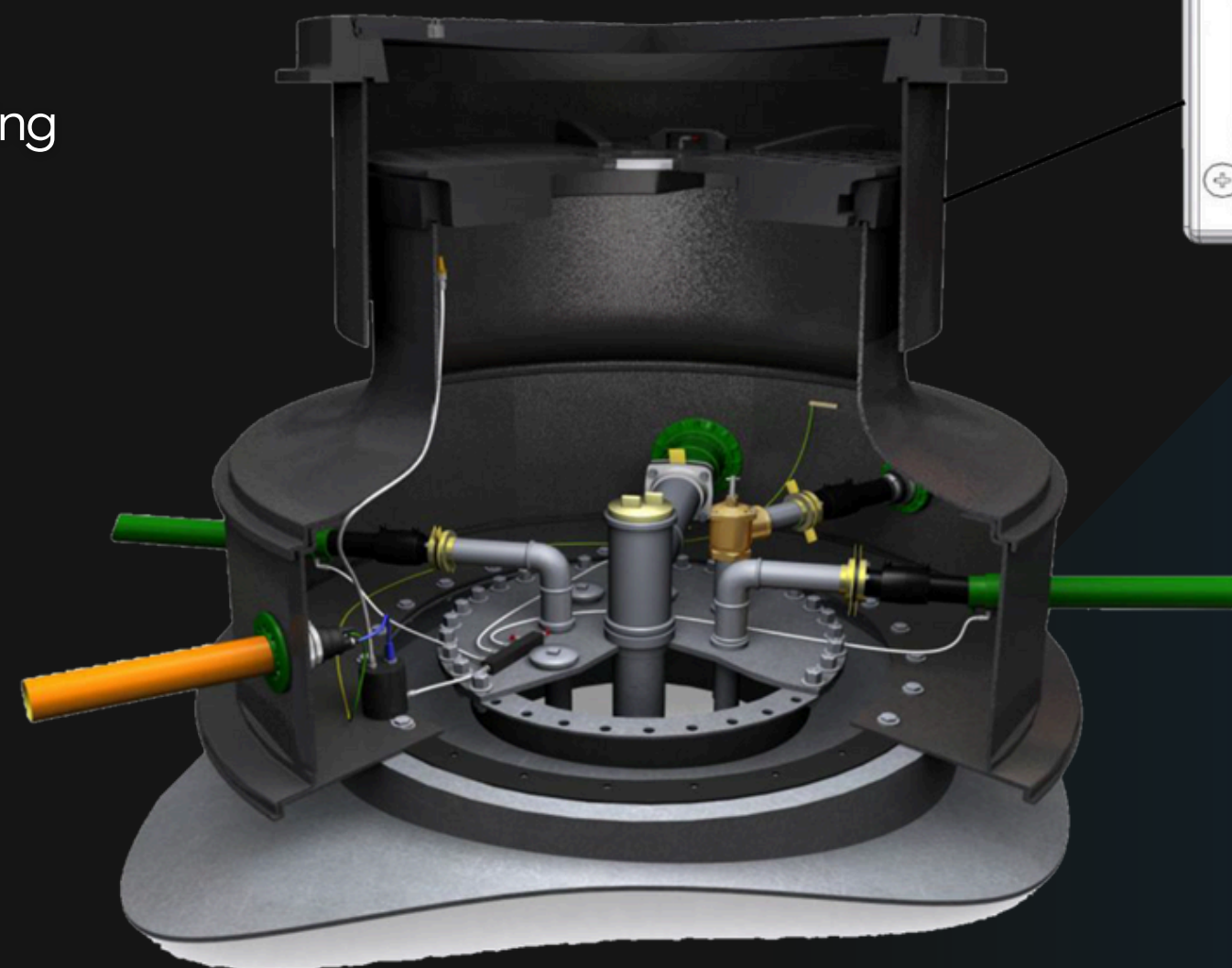
- Lockdown
- Saline-alkali resistance
- Antiskid
- Anti-static
- Colors can be customized
- Lane load-bearing areas and non-load-bearing areas of the gas station

DIMENSION		DEPTH OF INSERTION	COVER DIAMETER	LOADING CLASS
COVER	850*850mm	35mm	850*850mm	C250
	850*850mm	35mm	850*850mm	B125
FRAME	DIMENSION	FRAME DEPTH (H)	FRAME OUTER DIAMETER (OD)	CLEAR OPENING (CO)
	930*930mm	80 mm	930*930mm	775*775mm

DIMENSION		DEPTH OF INSERTION	COVER DIAMETER	LOADING CLASS
COVER	600*600mm	30mm	610*610mm	C250
	600*600mm	30mm	610*610mm	B125
FRAME	DIMENSION	FRAME DEPTH (H)	FRAME OUTER DIAMETER (OD)	CLEAR OPENING (CO)
	680*680mm	70 mm	680*680mm	560*560mm

# LEAK DETECTION SYSTEMS

- Low maintenance - no compressor or refill of gas bottles needed
- Can be retrofitted on existing stations
- Cost efficient: One alarm unit can be used for surveillance of up to 6 chambers
- Visual and audio alarm
- Can be integrated with existing gauging
- Approved to EN13160



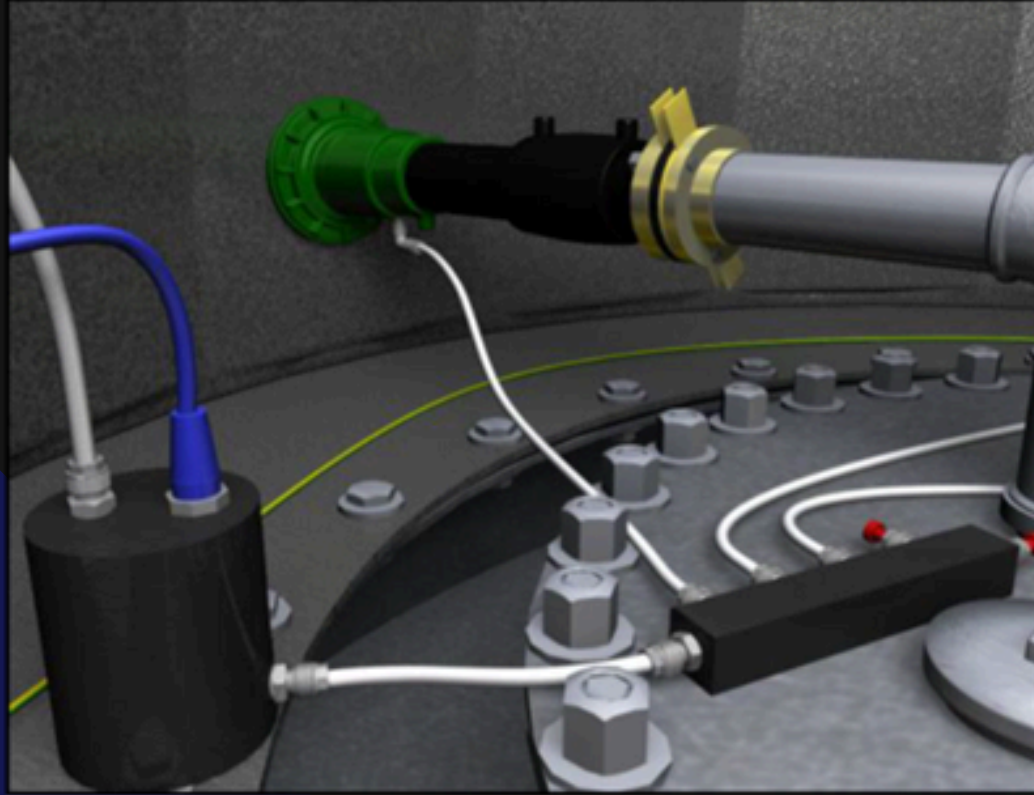
# LEAK DETECTION SYSTEMS



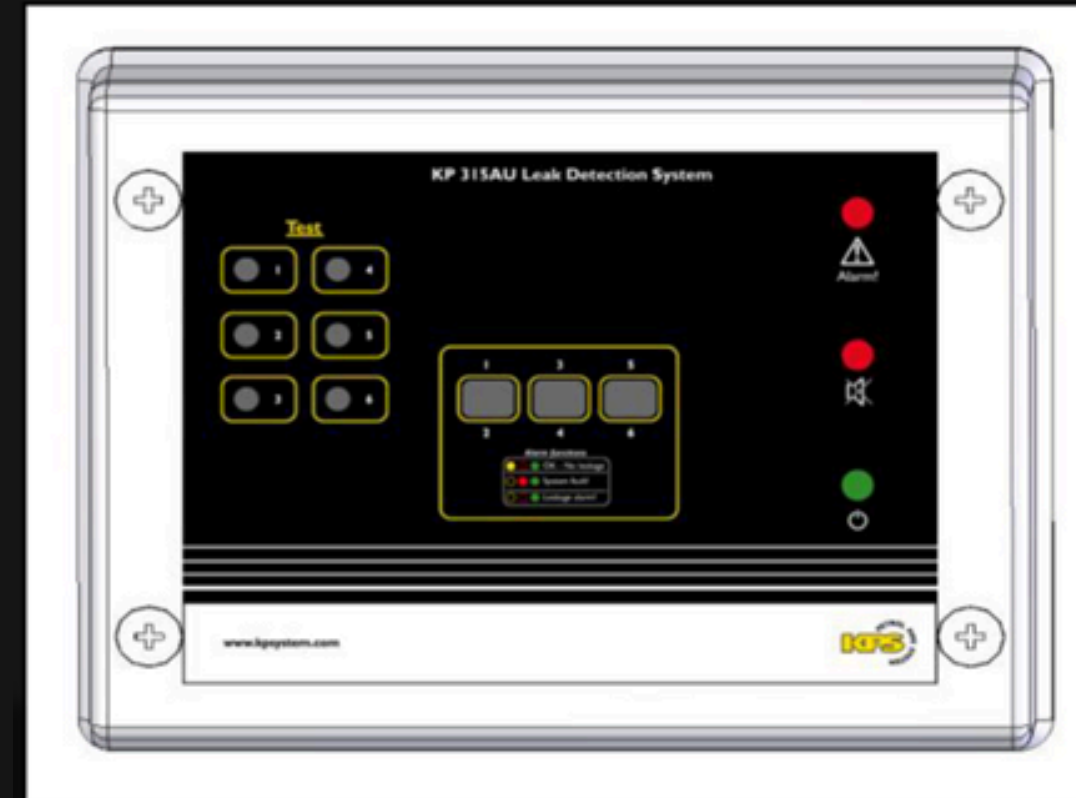
Up to four pipelines can be connected to one leak detection unit.

a pressure and vacuum free system that uses gravitation for the detection of leakage. Up to four double walled pipes can be connected to the leak detection unit that is placed in the tank chamber. In case of a leak into the interstitial space of the pipes, the liquid (hydrocarbons, methanol, ethanol, or water) will flow into the leak detection unit and trigger an alarm signal to the alarm unit.





The leak detection units are placed on the bottom of the chambers and connected with polyamide tubing to the test port of the double walled pipe.



The alarm unit should be installed in the station building where it can be seen and accessed by the station staff.

F20-MM36	External(two sides are Fixed) NPT/BSP/BSPT 2"	610*610mm
F30—MM18	External(two sides are Fixed) NPT/BSP/BSPT 3"	18"(457.2mm)
F30-MM24	External(two sides are Fixed) NPT/BSP/BSPT 3"	24"(609.6mm)

## PRESSURE VACUUM VENT

Pressure Vacuum Vents are installed on the top of vent pipes from underground or above ground fuel storage tanks. The vent cap and internal wire screen are designed to protect the tank vent lines against intrusion and blockage from water, debris or insects. A normally closed poppet in the valve opens at a predetermined pressure or vacuum setting to allow the tank to vent.

## FEATURES & BENEFITS

- Reliable Service-vent cap drain spouts extend outward to deter rainwater entry.
- Corrosion-Resistant Construction-Aluminum body and cap assure a long service life.
- Slip on models that provide for attachment to the vent line with set screws.
- Complies with NFPA 30 Requirements – for venting gasoline vapors upward



# OPEN ATMOSPHERIC VENTS

Open Atmospheric Vents are installed on the top of vent pipes from underground or above ground fuel storage tanks. The vent cap and internal wire screen are designed to protect the tank vent lines against intrusion and blockage from water, debris or insects. These vents are always open to atmosphere and allow any pressure or vacuum into the tank to vent

## Materials

- Body: aluminum
- Screen: 40-mesh brass
- Set Screws: brass

## Features & Benefits

- Reliable Service — Vent cap drain spouts extend outward to deter rainwater entry.
- Corrosion-Resistant Construction — Aluminum body and cap assure a long service life.
- Easy Installation — The 23 is available in 2" and 3" slip-on models that provide for attachment to the vent line with set screws.
- Complies with NFPA 30 Requirements — For venting gasoline vapors upward.
- High-Maximum Flow Rate — 7,000 SCFH at 2 psi (0.14 bar) pressure drop p.
- 40- Mesh Brass Wire Screen — Helps prevent debris and insects from entering the tank vent lines.



NOMINAL SIZE	LD.	O.D	WEIGHT APPROX	VOLUME (60M/ROOL)
OV23-01	11/02/2025	38	3.8	0.11

# SUBMERSIBLE PUMP SYSTEM



# SUBMERSIBLE PUMP SYSTEM

The submersible pump is an oil conveying equipment which is widely applied to petroleum and petrochemical industry. The biggest characteristic of the submersible pump is that it basically changes the conveying way of oils, which means to change the self-sucking oil supply with negative pressure into the pushing oil supply with positive pressure. This advanced technology promotes the development of gas stations towards the direction of large scale and environmental protection. According to the related statistical data, it shows that there are 45% gas stations and oil conveying systems around the world to take the submersible pump as the first choice for oil conveying.

## FEATURES AND BENEFITS

- Suitable for multiple nozzles, which solves the problem of large-flow refueling pump configuration of multiple nozzles.
- Easy Installation — The 23 is available in 2" and 3" slip-on models that provide for attachment to the vent line with set screws.
- Positive pressure oil transmission is not affected by the pipeline, which enhances the flexibility of the layout of the gas station.
- No gas resistance phenomenon, and longer oil pipeline can be used to transport oil in the case of super height difference.





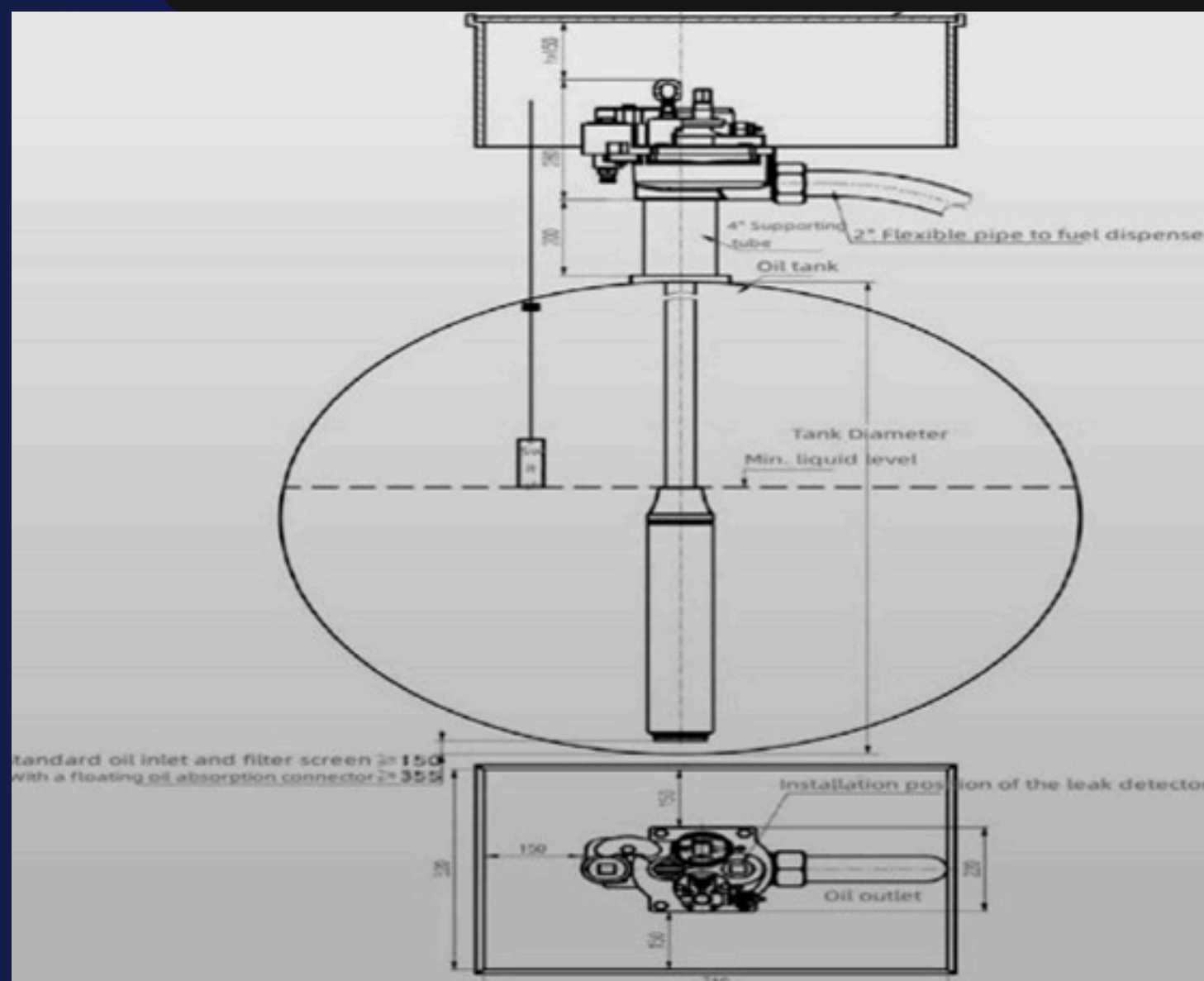
- Provide a leakage detection device for online detection
- Simple pipeline, submersible pump installed in the well, motor installed in the tank, immersed in oil, pure working environment, stable temperature, low failure rate, and maintenance capacity.
- Low noise operation.
- Low-cost investment and low maintenance costs

### SELECTION PARAMETER

Product No.		Horsepower	Power(KW)	Voltage(V)	Frequency( Hz)	REev.(RPM)	Flow(L/min)	Outlet connection
HP240R		1.5	1.1	220	50	2850	240	Female thread NPT 2
HP240RB					60	3400		
HP240R1				380	50	2850		
HP240R1B					60	3400		

HP228R	0.75	0.56	220	50	2850	228	Female thread NPT 2
HP228RB				60	3400		
HP240R1			380	50	2850		
HP228R1B				60	3400		
HP380R	2	1.5	220	50	2850	380	Female thread NPT 2
HP380RB				60	3400		
HP380R1			380	50	2850		
HP380R1B				60	3400		

# INSTALLATION DIAGRAM







# Thank You.

*We are ready to support your projects with  
reliable contracting and infrastructure solutions.*



+966 59 134 6662



[www.wacamco.com](http://www.wacamco.com)